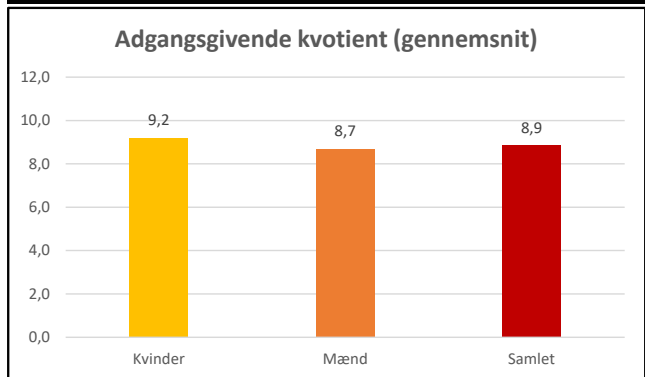


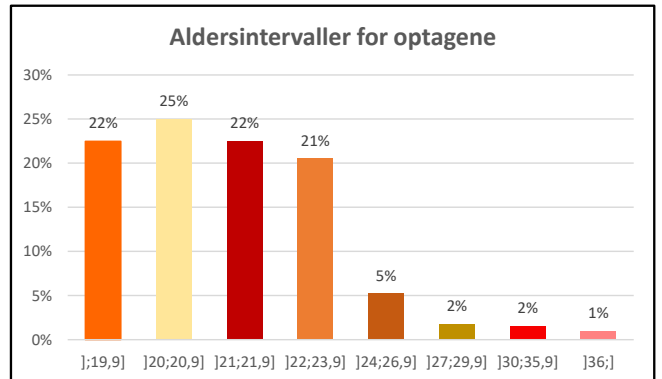
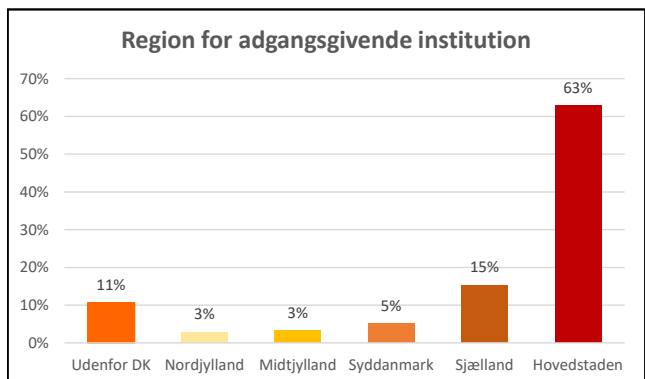
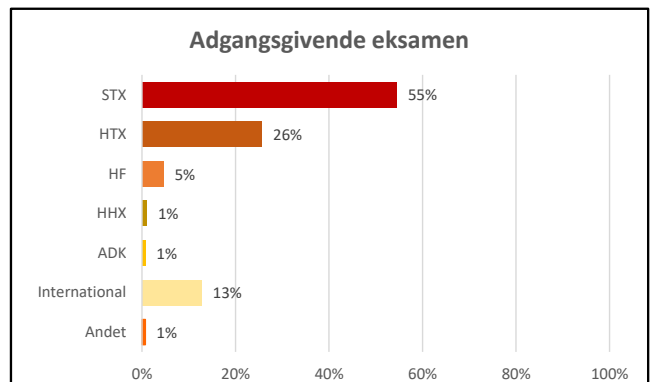
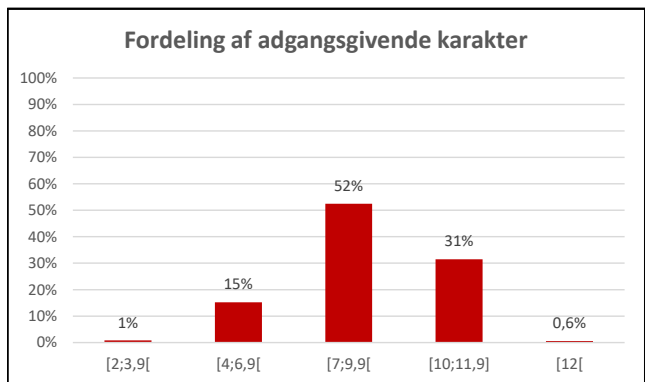
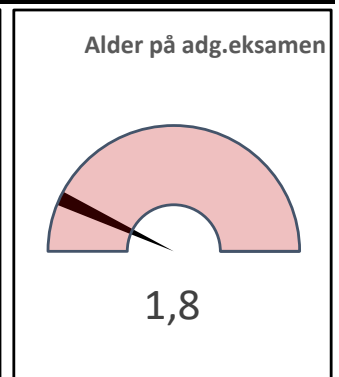
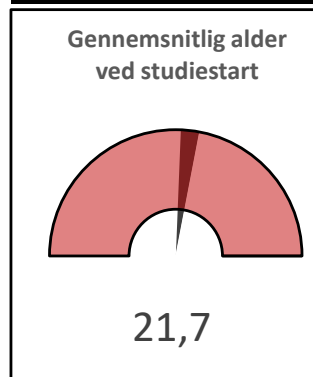
Profil af en årgang DTU for:

civilbachelor, civilbachelor, 2022

Antal optagne
1241



Heraf kvinder
33%



Denne profil indeholder deskriptiv statistik om de forskellige års optag på bacheloruddannelsen i teknisk videnskab (civilbachelor) og diplomingeniøruddannelsen.

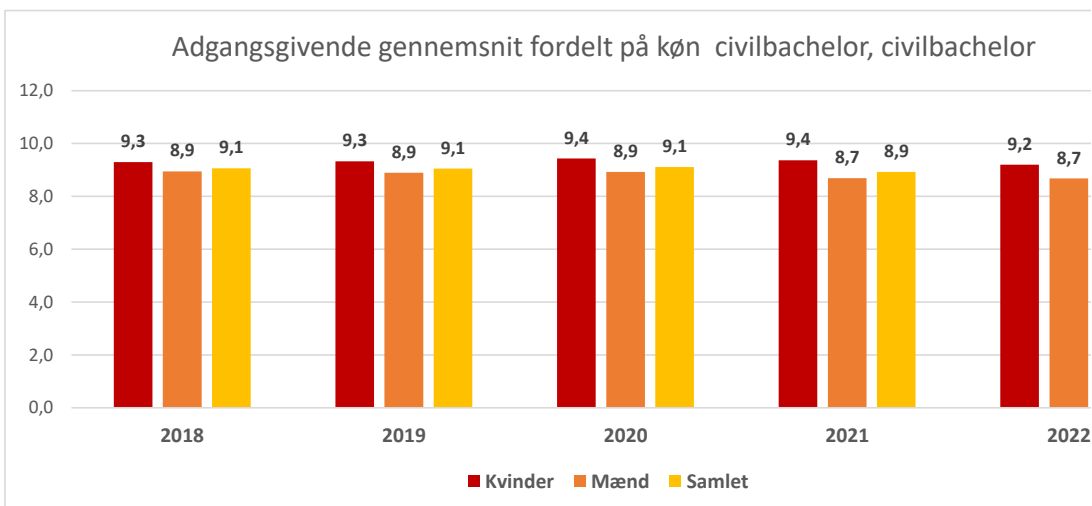
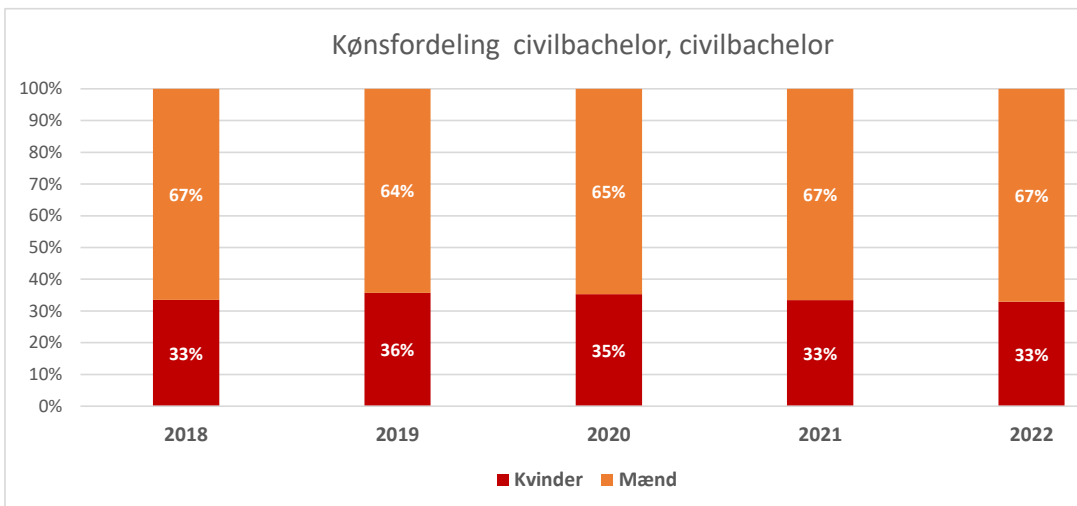
Formålet med profilen er at beskrive nogle af de nyoptagnes karakteristika i form af deres uddannelsesmæssige, geografiske og aldersmæssige baggrund.

Talmaterialet i nærværende profil baserer sig på de oplysninger, som DTU registrerer om de studerende til brug for behandling af deres ansøgning om optagelse.

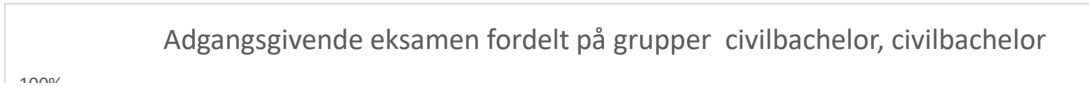
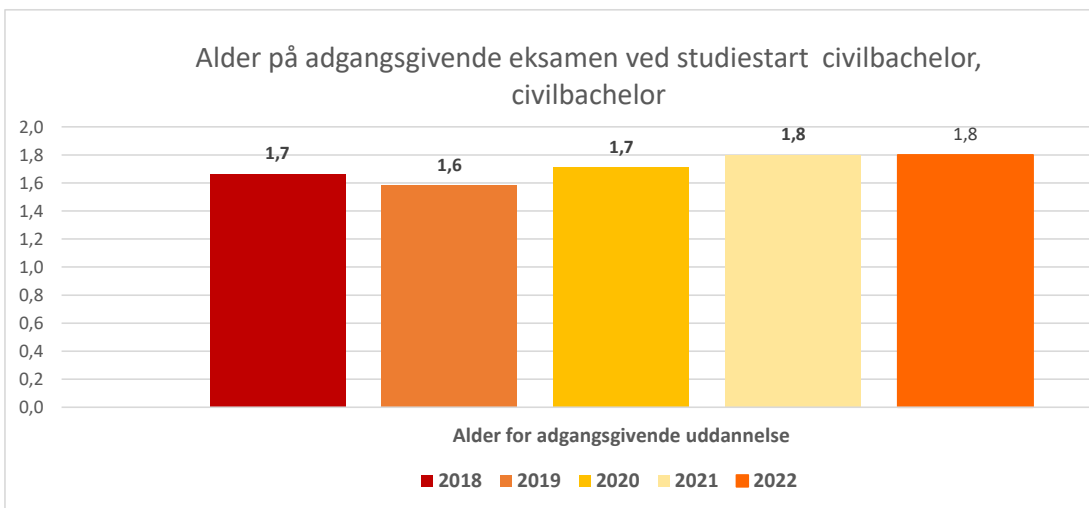
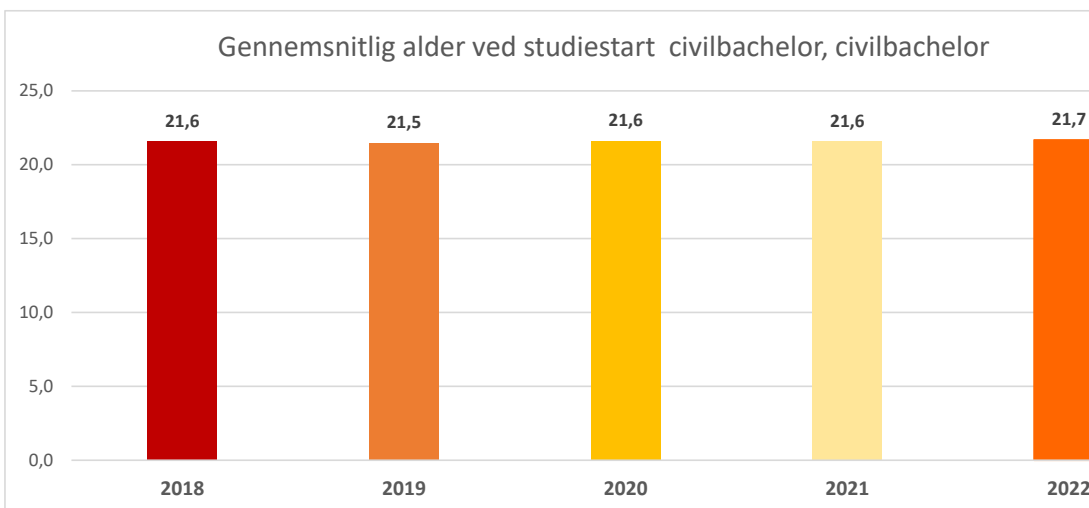
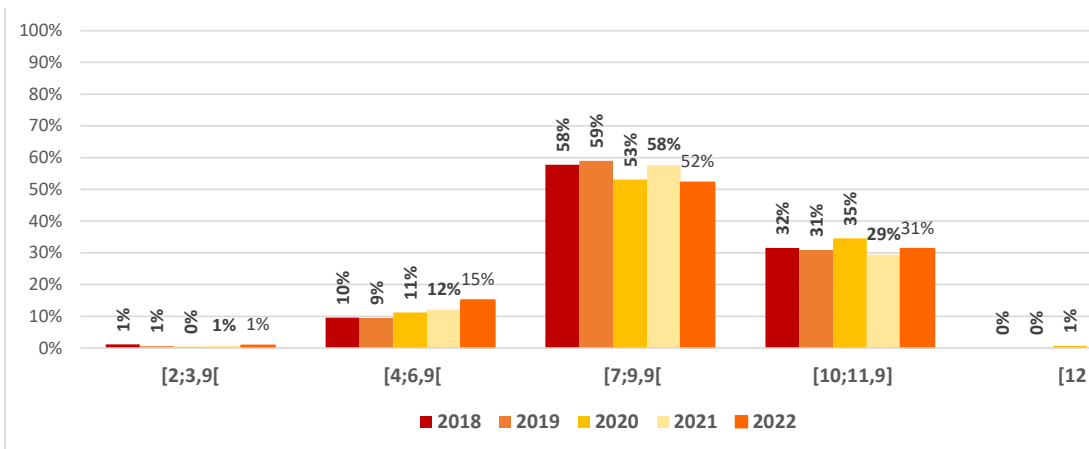
Perioden 2018-2022

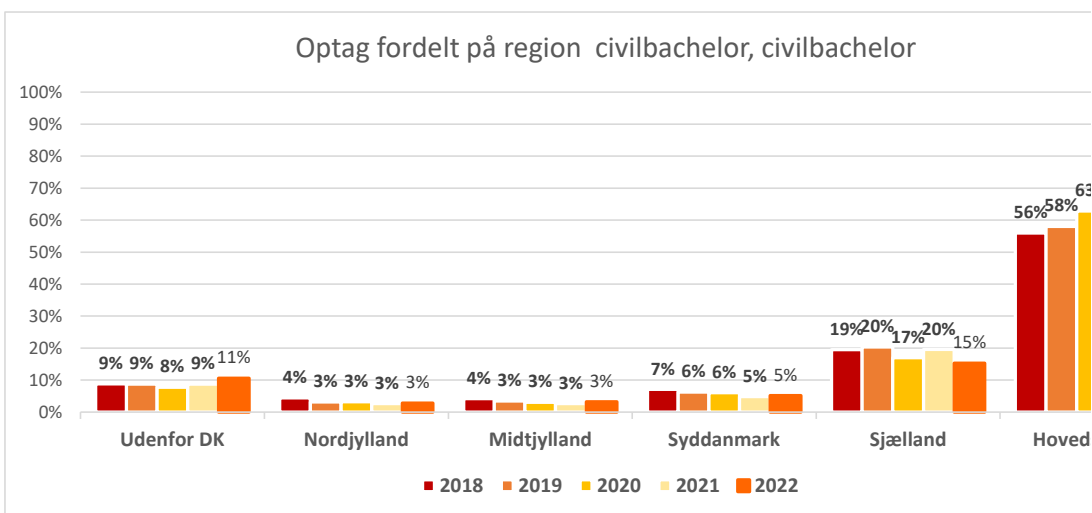
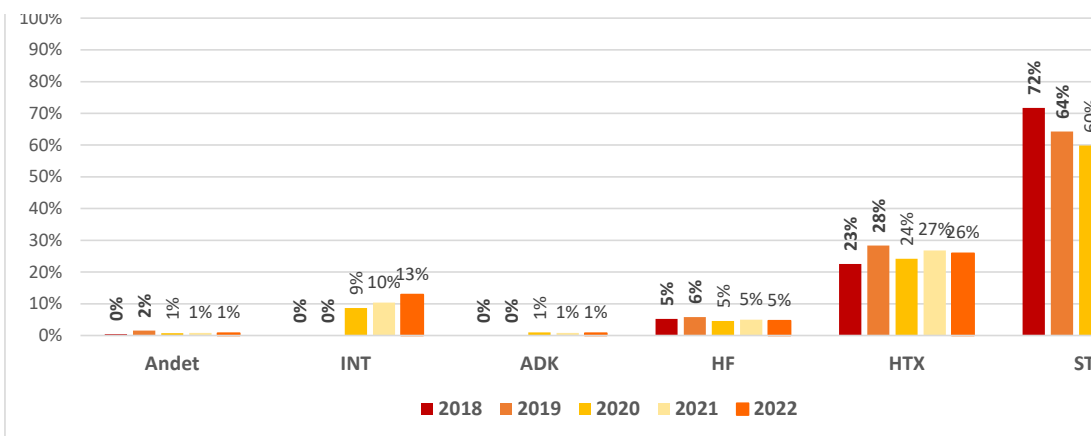
Optag for civilbachelor, civilbachelor

	2018	2019	2020	2021	2022
Antal	1272	1327	1533	1334	1241
Udvikling i %		4%	16%	-13%	-7%

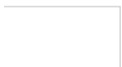


Adgangsgivende gennemsnit grupperet civilbachelor, civilbachelor

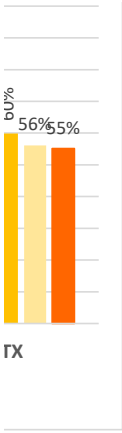




Udvikling 2018-2022
-31
-2%







TX



Istden